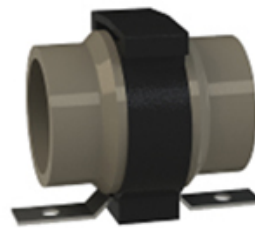


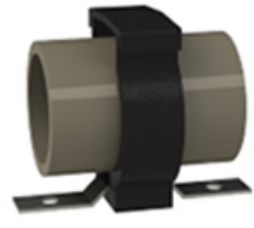
Expansion Results for your Asahi Piping System

These are the values you entered:

Length of Run: feet (0m)
Pipe Material: Select Material
Install Temp: °F
Operating Temp: °F
Outside Diameter: Select Pipe Diameter (")
SDR: Select SDR
Change in Length: in
Min. Straight Length: in



FP = Fixed Point
Restraint fittings secure pipe to structure creating a rigid point



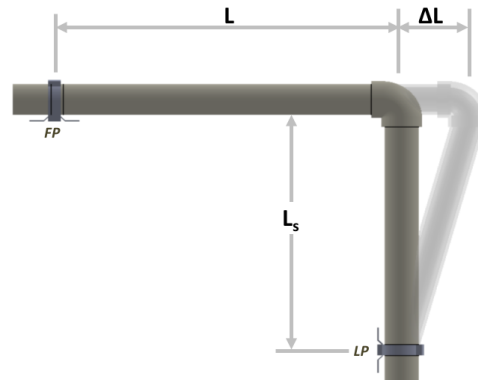
LP = Loose Point
Allows expansion and contraction while guiding and supporting

Sliding Elbow

L (Length of Run)
0' (0m)

ΔL (Change in Length)
0in (0mm)

ΔL_s (Min. Straight Length)
0' (0m)



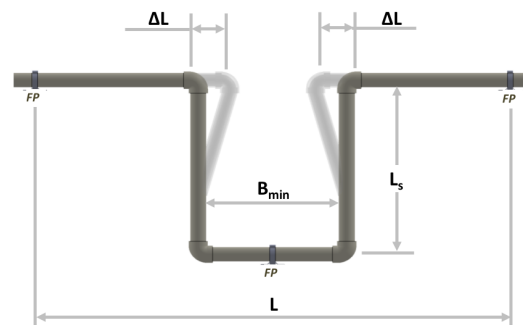
Expansion Loop

ΔL (Change in Length)
0in (0mm)

L_s (Min. Straight Length)
0' (0m)

B_{min} (Min. Distance)
0in (0mm)

L (Length of Run)
0' (0m)



Please note the communication and information provided herein is intended to give a basic knowledge of the specifications and performance of the related product. This information is general, and may not suit all applications. In every and all applications for the quoted products, please consult the professional responsible for the design, engineering, architectural and/or project application for the installation, incorporation and/or maintenance of the above products.