

Environmental Piping System

Poly-Flo[®]

DOUBLE
SAFETY!

Advanced PE and PP-R
Double Containment



Another
Corrosion
Problem
Solved.[™]


ASAHI/AMERICA[®]
Your Experts in Plastics[™]

www.asahi-america.com



Plastics. Purity. Performance. Problem Solved.

Asahi/America pioneered the market for thermoplastic valves in the United States and Latin America during a time when there was no viable alternative to metal for piping systems. Asahi/America began by promoting valves from a company known as Asahi Organic Chemical Industry Co., Ltd. and piping through AGRU GmbH in Austria. Through distributor and end-user education and acceptance, the use of thermoplastics has grown. Asahi/America now manufactures and distributes thermoplastic products including valves, actuators, single and double wall piping systems and specialty components throughout the United States and Latin America.



Asahi/America Corporate Headquarters in Lawrence, MA

Asahi/America is a diversified ISO9001:2008 certified manufacturer and supplier of corrosion resistant fluid flow products. Headquartered in Lawrence, Massachusetts, where we operate a 200,000-square-foot manufacturing and warehouse facility, Asahi/America supports all of our products with a comprehensive selection of in-depth technical documents and product catalogs. To access any of Asahi/America's technical documentation, testing information, or product catalogs, visit the company's web site at www.asahi-america.com or contact our Customer Service department at 1-800-343-3618.

Another Corrosion Problem Solved™

Our valves, actuators and piping systems have been solving corrosion problems in the world's leading industrial, municipal and entertainment installations for more than four decades. From the harshest chemicals to the toughest weather conditions, our family of fluid flow solutions provides extended life cycle and dependable performance to a wide range of applications.

Another Corrosion Problem Solved.™



Poly-Flo® - Advanced PE & PP-R

Poly-Flo's® unique unitary construction saves time and labor on each project. Low cost and easy installation makes Poly-Flo® the ideal system for drainage systems, pressurized transfer lines and industrial applications.

Typical Poly-Flo® installations include water and wastewater treatment applications using sulfuric acid, caustic soda and sodium hypochlorite; and chemical processing and semiconductor applications handling sodium hydroxide, aluminum nitrate, and sulfuric and hydrofluoric acid.



Supply Range

Standard Sizes: 1x1-1/2 (32x50mm), 2x3 (63x90mm) and 4x6 (110x160mm)

Materials: Proline® PP-R, Advanced PE

Welding Methods:

Simultaneous butt fusion

Staggered butt/induction closer coupling

Features and Benefits

- Unique co-extruded and molded system. In other double containment pipe systems, the inner and outer components are made separately and then assembled into a double wall configuration.
- The carrier and containment pipe have OD consistent with metric dimensions.
- Available with manual and low point leak detection sensors only.

Sample Specification

System shall be Asahi/America's Poly-Flo® PP and Advanced PE co-extruded double containment pipe. System shall meet the pressure and materials requirements of the specifications. Poly-Flo® co-extruded pipe has a carrier pipe rating of SDR11 rated for 150psi at 68°F, and containment pipe rating of SDR17 rated for 90psi at 68°F.

Please consult Asahi/America for expanded product sample specification.

Why Choose Poly-Flo®?

Poly-Flo® pipe and fittings are stocked in our Massachusetts warehouse, which reduces lead times when compared to other double containment piping systems.

Poly-Flo's® smaller profile dimensions are ideally suited for installations that possess tighter space constraints such as chemical rooms, retrofits or narrow pipe trenches.

Poly-Flo® is self-restraining making it ideal for horizontal directional drilling (HDD).

Unitary construction reduces the influence of expansion and contraction typically seen with fabricated systems.

Poly-Flo® Ideal Applications

- Horizontal directional drilling
- Applications where there are fluctuations in temperature
- Installations with tight space constraints
- Chemical piping





OIL AND GAS

Fracking
Petrochemical
Exploration
Flow-Lines



INDUSTRY

Chemical
Steel Galvanization
Automotive



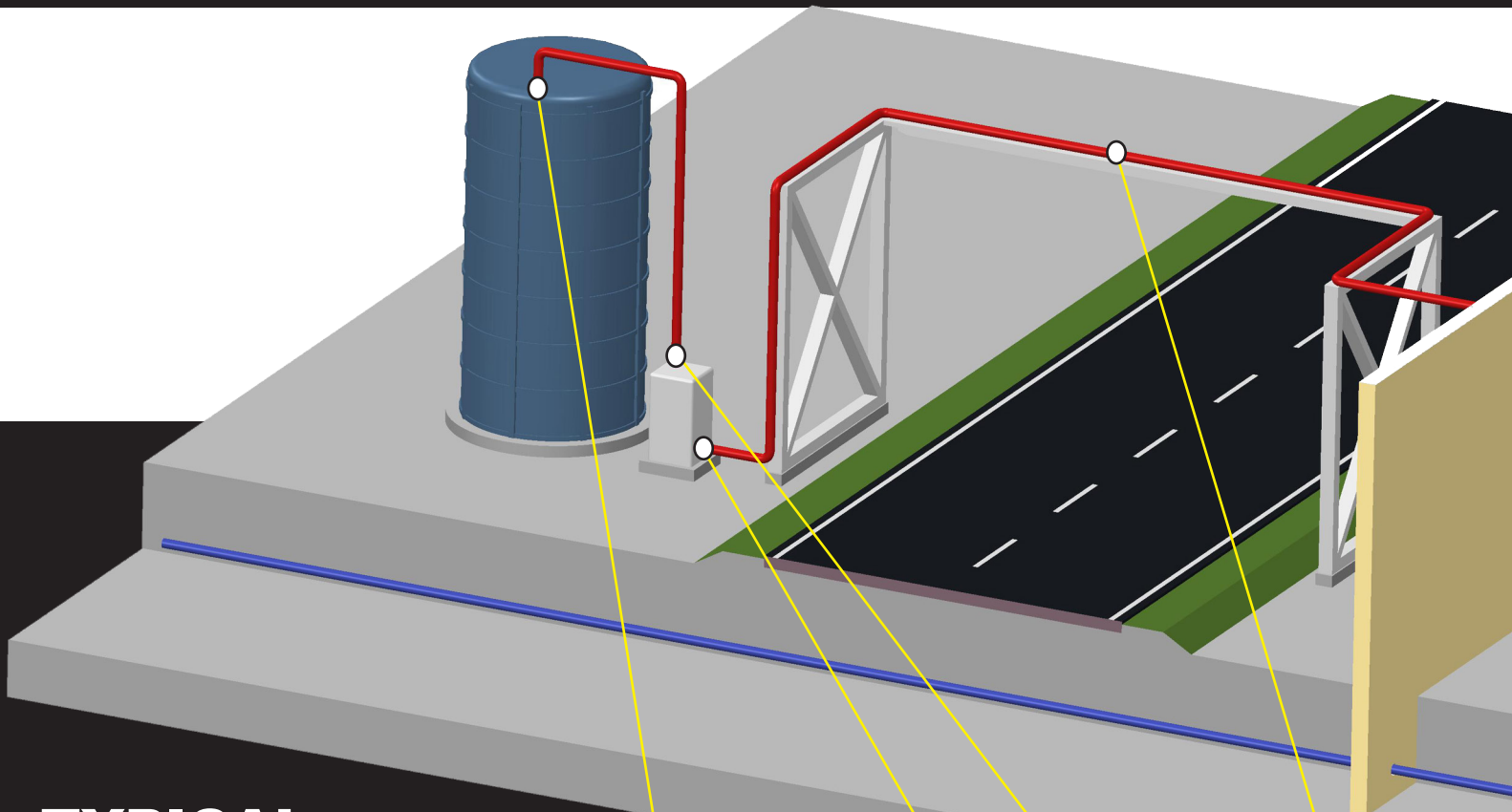
MINING

Chemical
Slurry
Waste



INFRASTRUCTURE

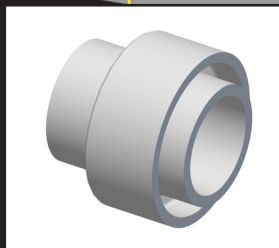
Airports
Power Plants
(Water Drains)



TYPICAL APPLICATIONS FOR POLY-FLO® PIPING SYSTEMS

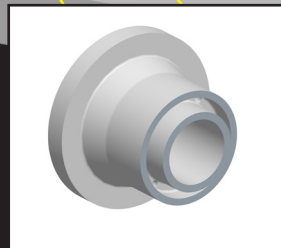


www.asahi-america.com



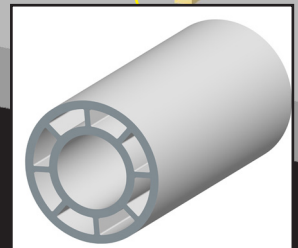
DOGBONE® End Termination

Transition from
double to single wall
piping systems



FLANGE ADAPTER

For mechanical
connections and for
where welding is not
possible



POLY-FLO® PIPE

Suitable for above
ground installations
and direct burial
without bedding



FOOD & BEVERAGE

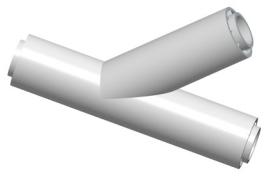
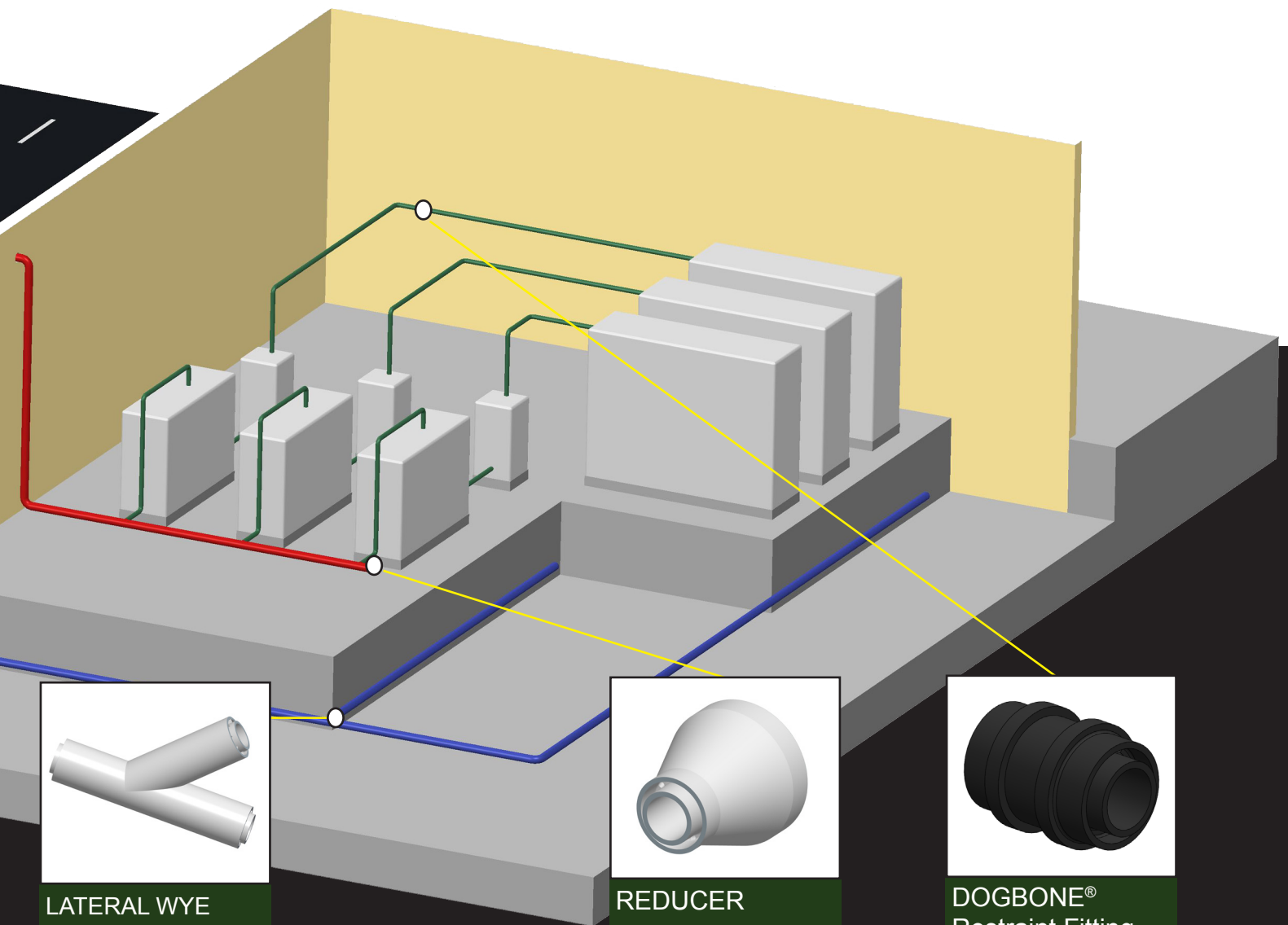
Microelectronic
Life-Science Industry
Laboratories
Waste Drain Pipe
Chemical Process Piping



WATER & WASTE TREATMENT

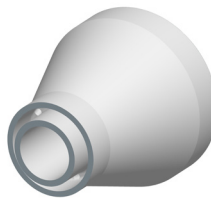
Chemical Feed Lines
Chlorination Pipes

APPLICATION AREAS FOR POLY-FLO® PIPING SYSTEMS



LATERAL WYE

For drainage branch connections



REDUCER

Transition from large to small diameter



DOGBONE® Restraint Fitting

Secures the piping system from thermal expansion





Piping system with double safety

Asahi/America's double containment pipes have been used very successfully in a wide range of applications for many years. They fulfill today's top requirements in the field of chemical processing. Our Poly-Flo® system compliments our existing fabricated double containment systems which have proven their worth over decades of use.

Poly-Flo® is installed using simultaneous butt fusion which ensure an easy and cost effective installation. Additionally, the installation space is reduced due to the smaller outside diameter of the system. Poly-Flo® is ideal for differential expansion/contraction with the carrier and containment pipe and is perfectly suited for horizontal directional drilling as well. Several leak detection options exist which can be installed to alert the operator of a breach of media into the containment section.

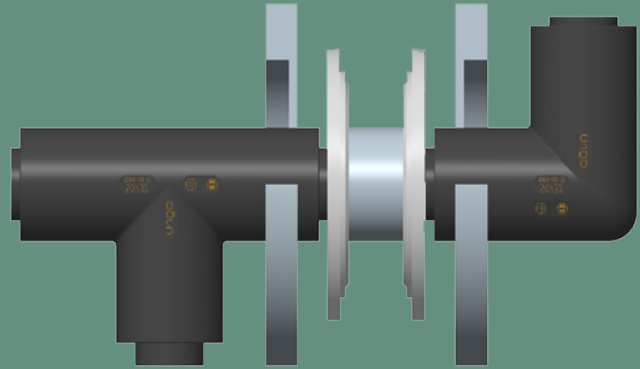
Advanced PE construction

- Excellent chemical and corrosion resistance
- UV resistant for above ground applications
- Below ground installations - no special backfill required in the trench
- Superior stress cracking and abrasion resistance
- High creep rupture strength
- Wide temperature range (between -22°F - 140°F)
- Exceptional weldability



Welding

Poly-Flo®



TOOL SELECTION

Utilize standard equipment to weld, no special inserts are required.



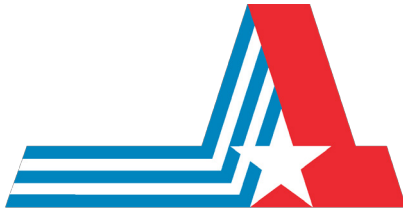
Miniplast®

	32 x 50	63 x 90	110 x 160
	1 x 1-1/2	2 x 3	4 x 6
Miniplast®	X	X	
Maxiplast®	X	X	X
Field 6	X	X	X
Shop 12		X	X
Field 12		X	X



Simultaneous welding

Another Corrosion Problem Solved.™



ASAHI/AMERICA®

Your Experts in Plastics™

655 Andover St. Lawrence, MA 01843

Tel: 800-343-3618; 781-321-5409

Direct Sales: East (800) 232-7244
Central (800) 442-7244
West (800) 282-7244

Fax: 800-426-7058

www.asahi-america.com

asahi@asahi-america.com